

# POWER CATS: FORM, FUNCTION AND FEATURES

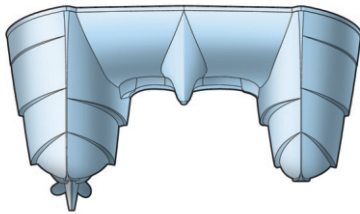


[www.aspenpowercatamarans.com](http://www.aspenpowercatamarans.com)

[info@aspenpowercatamarans.com](mailto:info@aspenpowercatamarans.com)

Aspen Power Catamarans are a new breed of cat, built with a Patented Power Proa hull that is one of the world's most efficient hull designs. This super green 40'er has so much less drag that at 17 knots she burns only 11 gph – and there's three staterooms, 2 heads and a flybridge! At 8 knots, she can run over 1,000 miles on 220 gallons. Ocean sea keeping is smooth, stable and dry. Aspen's are built w/pride in the Pacific Northwest by a seasoned team of craftsmen, engineers and technicians. Many have worked with Aspen's founder, Larry Graf, for 25 years. Larry also founded Glacier Bay Catamarans, having built over 3,000 power catamarans in the last 29 years. Exceptional quality in every component chosen and exacting detail in its installation are hallmarks of our company culture.

## PROA CAT



Aspen's revolutionary hull design has elements of the Proa cats used to cross the South Pacific. With one main hull and a supporting amma the boats are stable, yet exceptionally low drag and capable in all seas. Aspen's Power Proa scales this concept with a patented hull that allow it to run dry at speed and track like an arrow. Top speeds, 23 knots w / 435HP Volvo.

## SALON



Aspen's goal for the single level salon / cockpit was wonderful visibility combined with exceptional comfort and convenience. The salon includes an Ultra Leather dinette for 6, a double wide side by side helm station for the owners, a well-equipped 12ft galley, w / Burmese Teak cabinetry throughout.

## FLYBRIDGE



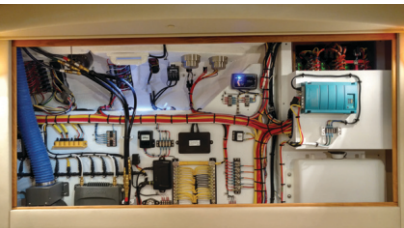
Big. Your first impression of the flybridge is its size. Aspen's C120 flybridge is 22'x10'7" with 140 sq. ft. of usable additional deck space; it's the best place to be outside. She includes a tastefully laid out helm station / large seating-sun pad. Options include a radar arch, Bimini top and even a 400-watt solar panel brow extension.

## KING MASTER



Big is also the first impression here. Not only do you have an Island King berth, you have dual teak hanging lockers, storage at the foot of the bed, under the bed and along the hull side. This master even has molded storage bins under the floor boards.

## ELECTRICAL SYSTEM



At Aspen, we understand that the electrical system is the heart and brains of the cat. It must be exceptionally reliable, over built, and labeled carefully so it's easily understood. We take great care in selecting only the best US components and use tinned marine grade wire. Blue seas, Cobra, and Master Volt are our key vendors for this system.

## QUEEN STATEROOM



This is a full-sized Queen berth with hanging locker, reading lights, 3 portlights and even a skylight for a light open-air feel. Just forward of this stateroom is a large 2nd head/shower/vanity with 6'8" head room for tall guests. The C120 also has a third twin stateroom under the galley. Sleeping for 5 standard.





ELEGANT  
SWIFT  
EFFICIENT



3 Models: 28' | 32' | 40'

3 Staterooms, 2 Heads, 40'x14',

Top Speed 24 kts, up to 1000 miles @ 8 kts, w/Opt 435 Volvo

Purchase Factory Direct

Burlington, WA 98233 - 360.668.4347 - [www.aspenpowercatamarans.com](http://www.aspenpowercatamarans.com)

